

2024

# generative art

dynamic & influential  
images with ai





Embark on a journey through the realms of divine wisdom, classical beauty, vibrant hues, and the evolution of human consciousness. "Ethereal Fusion" is a testament to the harmonious interplay between ancient myths, artistic masterpieces, the enchantment of colors, and the dawn of artificial intelligence.



A futuristic rendition of classical statues where a statue resembling Michelangelo's David stands next to a statue of a goddess resembling Athena. The scene is set against a vibrant background with yellow and orange tones, emphasizing a futuristic aspect.

Goddess Athena emerging from a centered explosion of colorful powder against a black background.





Michelangelo's David emerging from a central explosion of colorful powder on a black background.



The image captures the iconic statue in a dynamic pose, surrounded by vibrant clouds of red, blue, and yellow powder, which add a dramatic and artistic effect.



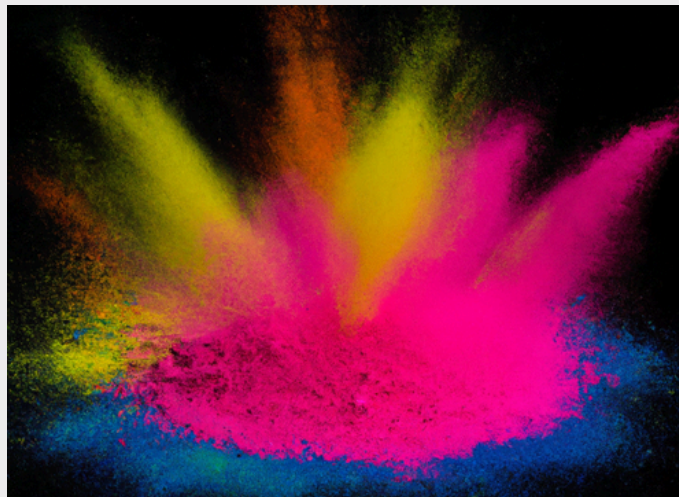
The background is pitch black, enhancing the visual impact of the colorful explosion enveloping the statue.







From the heart of the canvas, an explosion of vibrant hues erupts, casting a spellbinding spectacle against the profound darkness that envelops. Variations.





In "Ethereal Fusion," the uniqueness of each image resonates with the profound truth that no two moments of creation are ever identical. Each composition is a fingerprint of collaboration, a snapshot of a fleeting instance where human imagination and artificial intelligence entwine to birth something entirely unprecedented.

As you traverse the pages of this extraordinary collection, you are invited to marvel at the beauty of the one-of-a-kind, the unrepeatable, and the truly exceptional.





Goddess Athena depicted as a mentor in a futuristic neon environment. The scene captures Athena seated, looking thoughtfully at a neon-lit symbol of wisdom, represented by a stylized column topped with a radiant emblem.



A reinterpretation of Caravaggio's Medusa in a street art style, infused with urban and futuristic elements. The depiction showcases Medusa with vivid neon accents, emphasizing a modern, edgy twist.



The artwork features a distinctly female Medusa with a pale complexion and intricate details on her face that give a marble-like texture. Her hair is composed of vividly colored neon snakes in shades of pink and blue that intertwine and light up her surroundings.

The background showcases a dark brick wall, emphasizing the contrast with the glowing elements. This artwork blends classical mythology with contemporary street art style, placed in an urban setting to enhance its visual impact.





A dramatic reinterpretation of Caravaggio's Medusa, capturing the intense and mystical essence of the original artwork.

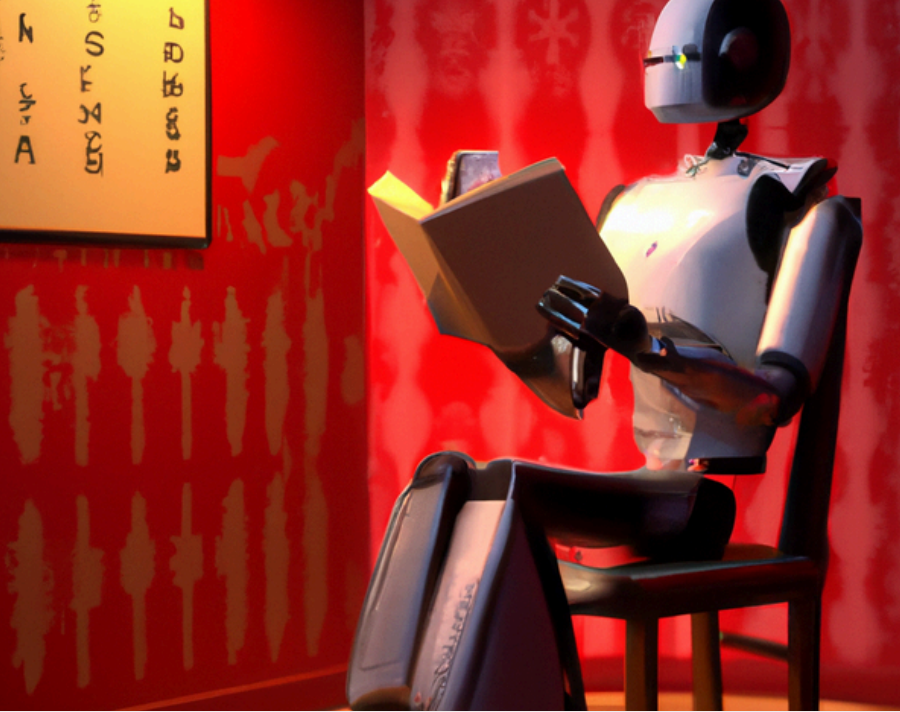
This modern portrayal features a distinctly female face with detailed serpents in her hair, rendered in a dark, moody style.







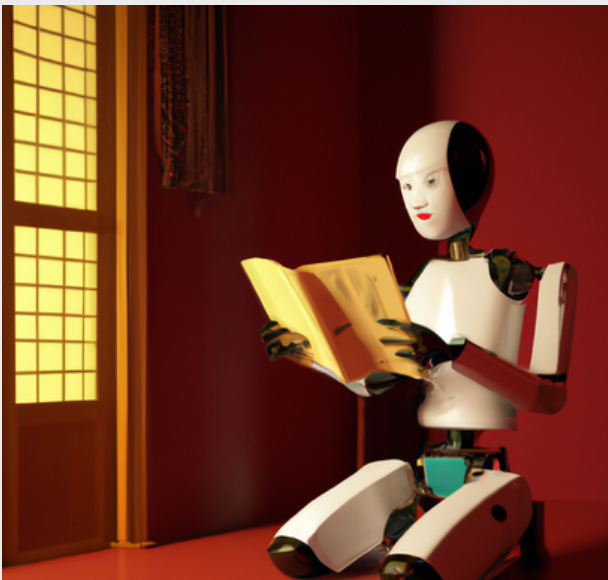




A realistic image of a robot reading a dictionary in a Chinese room. The concept pertains to Searle's experiment.



The robot belongs to the 1990s decade, predating advanced AI, and is unable to comprehend the words.



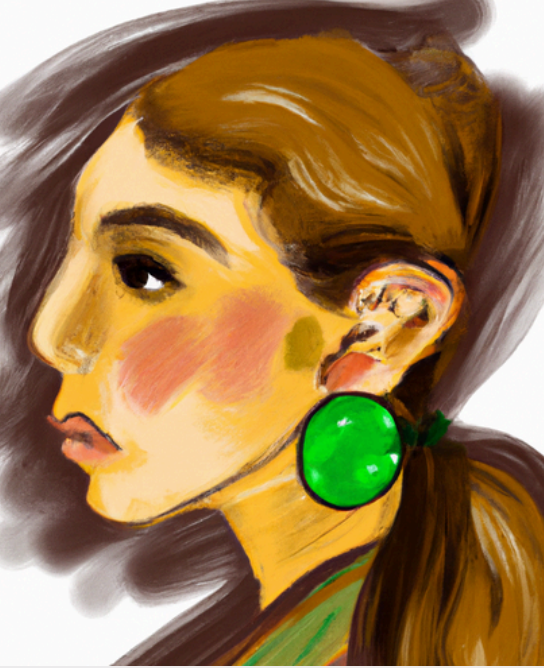


A futuristic neon city with great philosophers from history depicted in modern attire, engaging in deep conversation and reflection amidst towering skyscrapers, glowing holographic billboards, and bustling streets filled with advanced technology and flying vehicles. technologically advanced world.



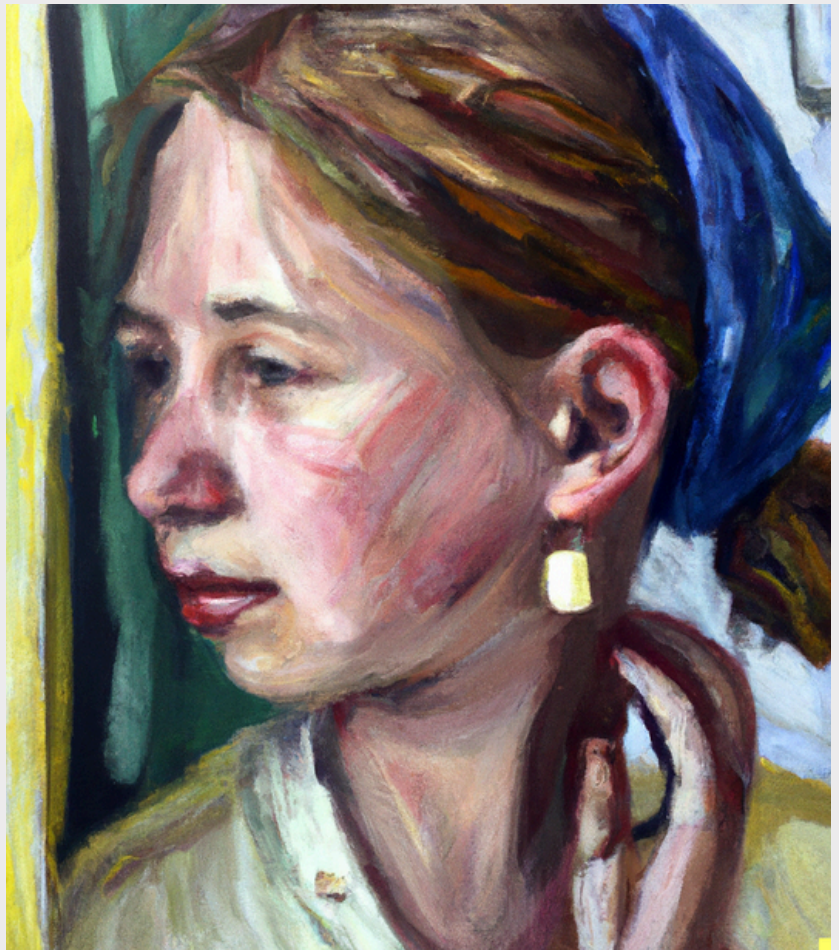
The cityscape blends elements of classical architecture with cutting-edge design, creating a visually stunning contrast. The philosophers are portrayed with a mix of traditional symbols and futuristic gadgets, emphasizing the timelessness of their ideas in a technologically advanced world.





A modern reinterpretation of Vermeer's 'Girl with a Pearl Earring,' showcasing a young woman with a contemplative expression, adorned with a single pearl earring.

The painting features vibrant, impressionistic brushstrokes and rich color palettes, blending classical elements with a contemporary artistic style. The background is subtly textured, complementing the subject's poised and enigmatic presence.



**The artificial intelligence, guided by its algorithms and the human touch, conjures a palette that is as ephemeral as the emotions it evokes.**